

A DARK ZONE

DELTARUNE

Composed by **TOBY FOX**

Arranged by **PIANOBIN**

$\text{♩} = 150$

mf

5

9 $\text{♩} = 200$ Swing

12

16 *mp*

The musical score for "A Dark Zone" is presented in five systems. The first system begins with a tempo marking of 150 BPM and a dynamic of *mf*. It features a piano introduction in 3/4 time, with a melody in the treble staff and a bass line in the bass staff. The second system continues the melody and bass line. The third system introduces a swing tempo of 200 BPM and a 4/4 time signature. The fourth system continues the swing melody and bass line. The fifth system concludes the piece with a final melody and bass line, marked with a dynamic of *mp*.

30

No Swing

A musical score for a piano piece. The score is written on two staves, treble and bass clef. The key signature has two flats (B-flat and E-flat). The tempo/mood is marked 'No Swing'. The music features a mix of chords and single notes, with some triplet markings in the bass line. The piece ends with a double bar line.

40 **Swing**

A musical score for a piece titled "Swing". The score is written for piano (p) and features a treble and bass staff. The key signature is B-flat major (two flats). The tempo is marked "Swing". The score begins with a treble staff containing a whole rest and a bass staff containing a whole note chord of B-flat and D-flat. The melody then enters in the bass staff with a series of eighth and quarter notes, including a triplet of eighth notes. The treble staff contains whole rests for the first three measures of the melody. The score is divided into measures by vertical bar lines.

cresc. _____

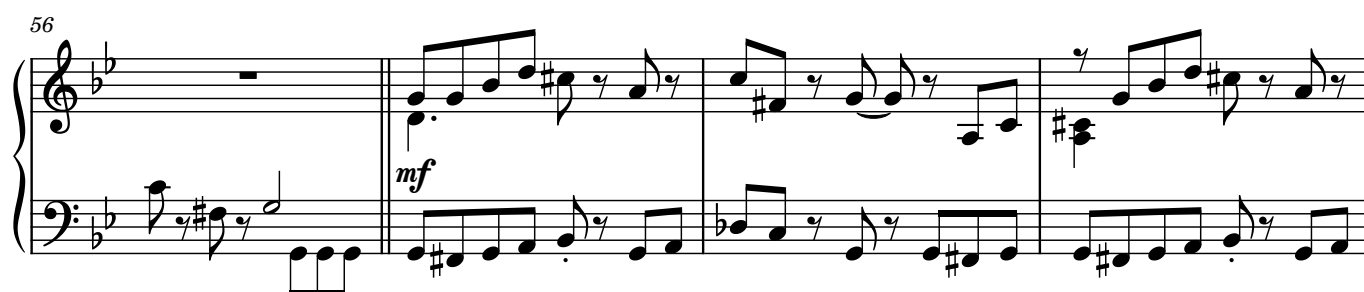
48

*(cresc.)* -----

52

*(cresc.)* -----

56



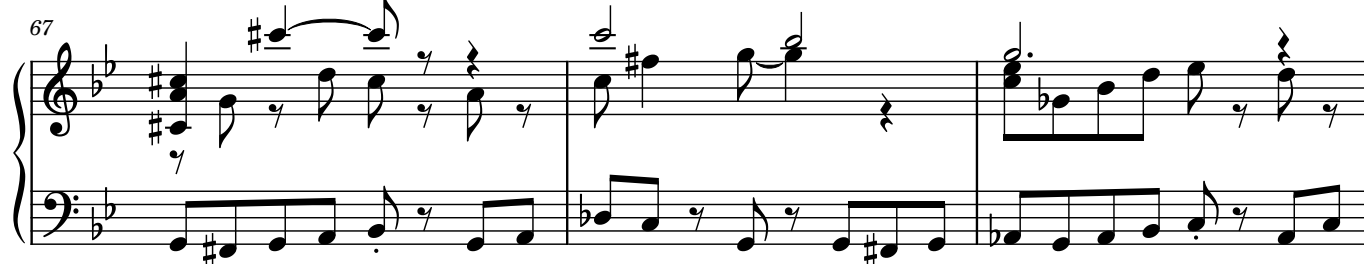
60



64



67



70

Measures 70-72 of a musical score in B-flat major. Measure 70 features a treble staff with a series of eighth notes and a bass staff with a steady eighth-note accompaniment. Measure 71 continues the treble melody with some ties and the bass accompaniment. Measure 72 shows a change in the bass line with some accidentals.

73

Measures 73-76 of a musical score in B-flat major. Measures 73 and 74 are marked with repeat signs. The treble staff has a melody of eighth notes, and the bass staff has a consistent eighth-note accompaniment. Measures 75 and 76 continue this pattern with some variations in the treble melody.

77

1.

Measures 77-80 of a musical score in B-flat major. Measure 77 has a repeat sign. Measures 78-80 are part of the first ending, marked '1.'. The treble staff features a melody that leads to a final cadence, while the bass staff continues its accompaniment.

81

2.

Measures 81-84 of a musical score in B-flat major. Measures 81-84 are part of the second ending, marked '2.'. The treble staff has a melody that leads to a final cadence, while the bass staff continues its accompaniment.

85

Measures 85-86 of a musical score in B-flat major. Measure 85 has a treble staff with a whole rest and a bass staff with a melody. Measure 86 continues the bass melody.